



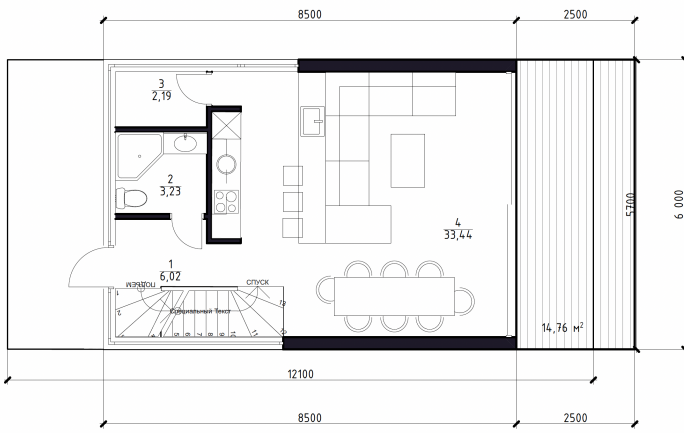
BUILT BY NATURE



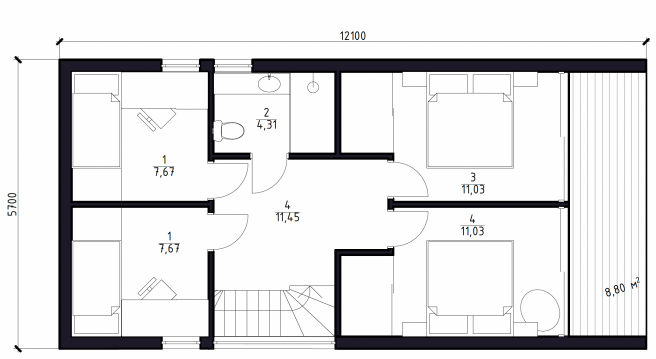
House Neo Hit

Total area: 135 m²
 Warm area: 111 m²
 Warm ground floor area: 51 m²
 Warm second floor area: 60 m²
 Area of terraces: 24 m²

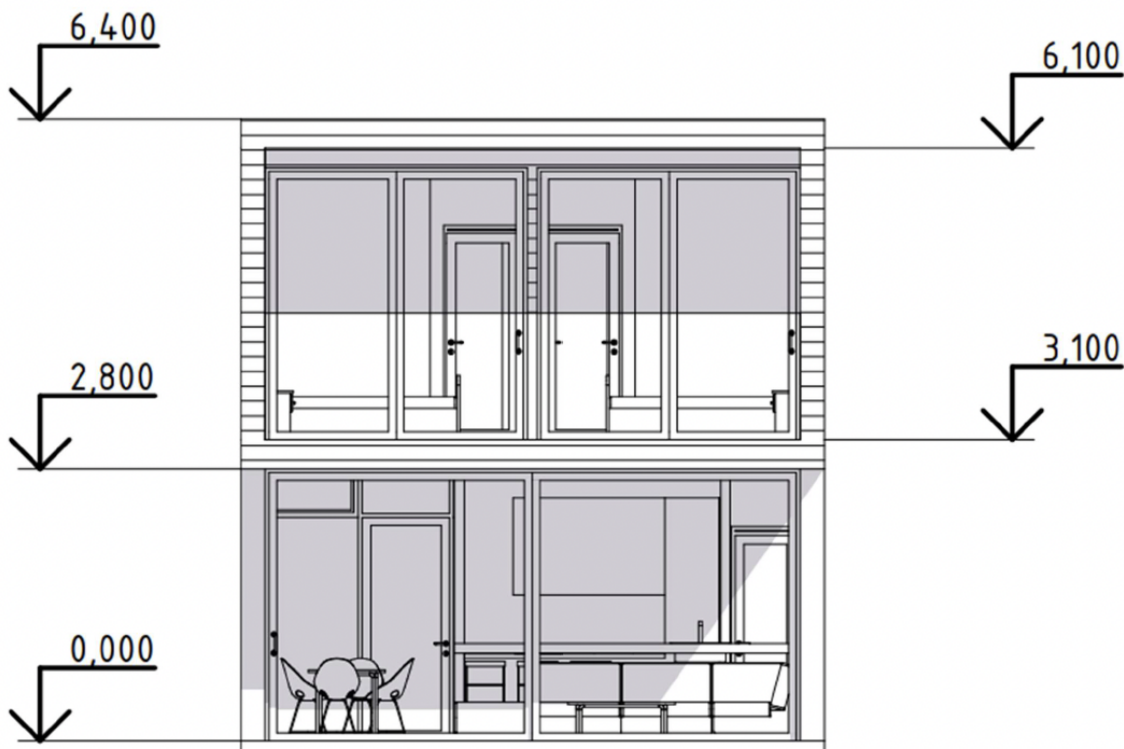
1 floor



2 floor



The cost of a house kit from timber 205x275 mm	146 700 €
House kit is a set of bearing structure, parts and other materials necessary for house construction. House kit is of maximum factory readiness, including all the necessary cuts, channels for electrics, installation of a seal.	
Detailed construction design.	✓
Finnish glued timber 205x275 mm.	✓
Modern corner, load-bearing beams and pillars, rafter system, floor joists, terraces and balconies.	✓
Auxiliary wood materials (gables frame racks, internal wall frame racks, roof lathing, frontal board, eaves filing board).	✓
Energy efficient European wood-aluminum pivot and fixed windows and exterior doors.	✓
Terrace board (factory).	✓



Offer valid until 31.10.2022



Finland, Espoo,
 Ruukinrannantie, 4
 Tel: +358 40 541 3301
 helsinki@lumipolar.com
 lumipolar.com

Cyprus, Limassol
 Tel: +357 96 608321
 cyprus@lumipolar.com
 lumipolar.com

BUILT BY NATURE